

Claribo®

PUMP



1" IN-LINE WATER FILTER

MODEL NO: PF1

PART NO: 7175105

INSTALLATION & MAINTENANCE INSTRUCTIONS

ORIGINAL INSTRUCTIONS

GC10/22

INTRODUCTION

Thank you for purchasing this CLARKE Water Filter designed for use with surface mounted pumps. This high quality filter with composite case includes a screw off bowl for easy cleaning of the filter element.

Before attempting to use this product, please read and follow these instructions carefully. In doing so you will ensure the safety of yourself and that of others around you and you can look forward to your purchase giving you long and satisfactory service.

Your filter has been designed to give long and trouble free service. If, however, having followed these instructions carefully, you encounter problems, consult your local CLARKE dealer.

SPECIFICATIONS

Model Number	PF1	CONTENTS
Dimensions (D x W x H) mm	125 x 128 x 190	1 x Filter
Air Inlet /Outlet Size	1" BSP (female)	1 x Filter housing spanner
Max Working Pressure	8 bar	1 x 1" Male adapter
Filtration Rating	5 micron	
Bowl material	Polycarbonate	

GENERAL SAFETY RULES

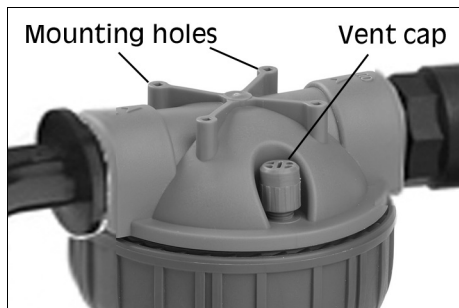
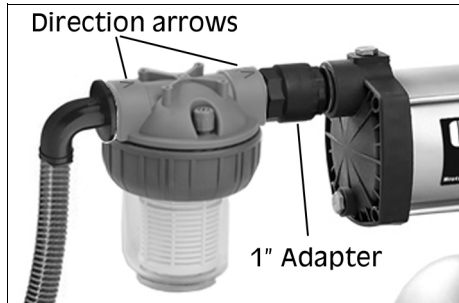
1. Keep the work area clean and tidy.
2. Keep children and visitors away - DO NOT let children handle the equipment.
3. DO NOT use for solvents, oils, fuels, chemicals or dangerously polluted water.
4. Check hoses for leaks or damage before use and ensure that all connections are secure.
5. Keep the flexible hose away from heat, oil and sharp edges.
6. Avoid damaging the components, for example by applying excessive force of any kind.
7. DO NOT exceed the maximum working pressure of 8 bar.

INSTALLATION

A typical connection layout is shown.

1. Keep pipe lengths to a minimum with the inside free of dirt.
2. Remove any blanking plugs from the connection ports and connect to the supply and delivery hoses or directly to the pump using the 1" male adaptor supplied.
3. Install the filter so that flow is as indicated by the direction arrows on the filter top moulding.
4. Mount the filter vertically ensuring there is sufficient free space below the filter for future access including use of the filter removal spanner.

Four holes are provided in the top moulding (shown below) to facilitate screw mounting to an overhead bracket (not supplied) if required. These holes will require tapping to match the threads of suitable machine screws.



MAINTENANCE

The filter can be disassembled without removal from pipeline using the spanner supplied to unscrew the filter bowl.

1. Ensure the water supply is turned off.
2. Unscrew the bowl and remove the filter cartridge.
3. Clean the components with warm soapy water only.

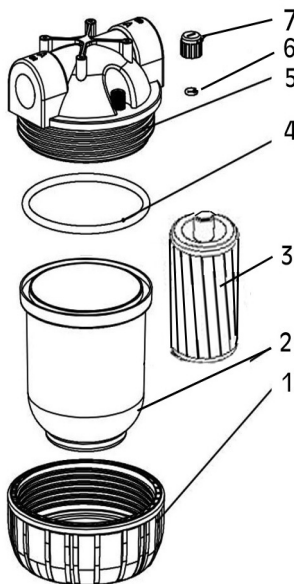
CAUTION: The bowl is made from polycarbonate which can be severely damaged if it comes into contact with some chemicals. These include acetone, benzene, carbon tetrachloride, ethylene di-chloride, gasoline or synthetic fire resistant lubricants.

4. Rinse and dry the parts. Blow out internal passages with compressed air. Eye protection should be worn when using compressed air.

5. Replace any parts found to be damaged.
6. After re-fitting the filter bowl and large O-ring, use a screwdriver to remove the vent cap and allow air to escape from the unit when the water supply is restored. (DO NOT lose the small O-ring).

COMPONENT PARTS

No	Description
1	Nut
2	Transparent bowl
3	Filter cartridge
4	O-ring
5	Top body
6	O-ring
7	Vent cap



ACCESSORIES

A wide range of accessories is available including adaptors, hoses etc. Contact your CLARKE dealer for further information or CLARKE International Service Department.

GUARANTEE

This product is guaranteed against faulty manufacture for a period of 12 months from the date of purchase. Please keep your receipt which will be required as proof of purchase.

This guarantee is invalid if the product is found to have been abused or tampered with in any way, or not used for the purpose for which it was intended.

Faulty goods should be returned to their place of purchase, no product can be returned to us without prior permission.

This guarantee does not effect your statutory rights.